

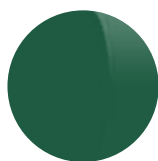
# COLORIZER



DIVEL FRANCE

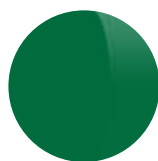
# Incontournables et Sundown unis

---



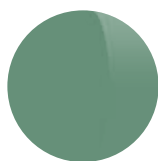
**Vert forêt**

CAT. 3- TV 11,88%  
réf. UNI 01



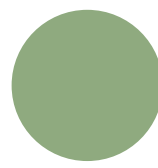
**Vert olive**

CAT. 3- TV 16,47%  
réf. UNI 02



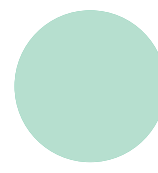
**Vert bouteille**

CAT. 2- TV 22,32%  
réf. UNI 07



**Vert vintage**

CAT. 1- TV 48,82%  
réf. TREND 15



**Vert d'eau**

CAT. 1- TV 68,18%  
réf. TREND 12



**Cuir vieilli**

CAT. 3- TV 12,85%  
réf. UNI 03



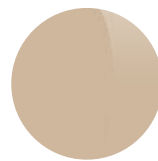
**Feuille d'automne**

CAT. 2- TV 26,26%  
réf. UNI 06



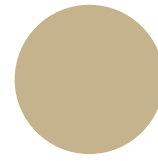
**Ocre**

CAT. 2- TV 31,07%  
réf. UNI 08



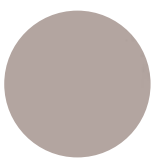
**Nude**

CAT. 1- TV 52,80%  
réf. UNI 11



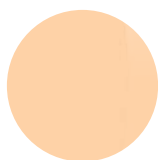
**Ambre**

CAT. 1- TV 65,00%  
réf. UNI 52



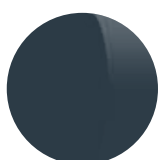
**Chocolat**

CAT. 1- TV 60,00%  
réf. UNI 76



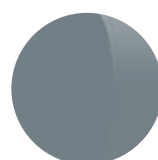
**Orange pastel**

CAT. 1- TV 69,68%  
réf. TREND 13



**Gris nature**

CAT. 3- TV 14,38%  
réf. UNI 04



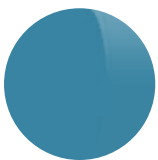
**Gris ardoise**

CAT. 2- TV 29,47%  
réf. UNI 05



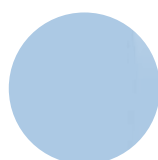
**Cendre**

CAT. 1- TV 54,36%  
réf. UNI 12



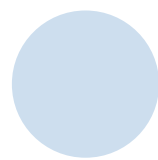
**Bleu**

CAT. 2- TV 34,80%  
réf. UNI 09



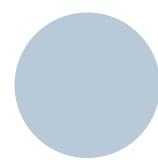
**Bleu Ciel**

CAT. 1- TV 61,45%  
réf. TREND 16



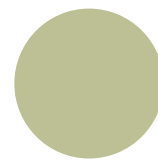
**Bleu Clair**

CAT. 1- TV 73,00%  
réf. UNI 57



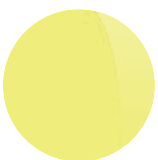
**Givre**

CAT. 1- TV 78,00%  
réf. UNI 70



**Noisette**

CAT. 1- TV 71,00%  
réf. UNI 74



**Jaune**

CAT. 1- TV 63,58%  
réf. TREND 10



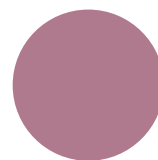
**Jaune Pastel**

CAT. 0- TV 88,74%  
réf. TREND 09



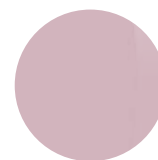
**Prune**

CAT. 2- TV 38,86%  
réf. UNI 10



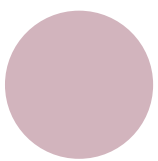
**Vieux rose**

CAT. 1- TV 56,26%  
réf. TREND 14



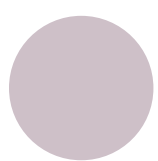
**Rose Poudré**

CAT. 1- TV 55,00%  
réf. TREND 11



**Rose clair**

CAT. 1- TV 72,00%  
réf. UNI 55



**Brume**

CAT. 1- TV 75,00%  
réf. UNI 72

# Dégradés - Bicoloreurs - Revo et Shimmer



Vert dégradé  
CAT. 2- TV 38,06%  
réf. SFU 05



G15 dégradé  
CAT. 2- TV 27,80%  
réf. SFU 02



Vert d'eau dégradé  
CAT. 1- TV 70%  
réf. SFU 09



Gris dégradé  
CAT. 2- TV 27,14%  
réf. SFU 08



Gris clair dégradé  
CAT. 2- TV 32,48%  
réf. SFU 07



Ocre dégradé  
CAT. 2- TV 23,69%  
réf. SFU 06



Ambre dégradé  
CAT. 1- TV 70,00%  
réf. SFU 56



Chocolat dégradé  
CAT. 1- TV 62,00%  
réf. SFU 77



Prune dégradé  
CAT. 2- TV 35,27%  
réf. SFU 03



Rose dégradé  
CAT. 1- TV 76,00%  
réf. SFU 58



Violet dégradé  
CAT. 2- TV 42,74%  
réf. SFU 04



Océan dégradé  
CAT. 2- TV 30,09%  
réf. SFU 01



Bleu Ciel dégradé  
CAT. 1- TV 73,00%  
réf. SFU 53



Givre dégradé  
CAT. 1- TV 74,00%  
réf. SFU 71



Brun/Gris  
CAT. 3- TV 12,47%  
réf. BIC 01



Gris + noisette  
CAT. 1- TV 60,00%  
réf. BIC 75



Bleu/Gris  
CAT. 2- TV 25,40%  
réf. BIC 02



Bleu/Jaune  
CAT. 2- TV 35,50%  
réf. BIC 03



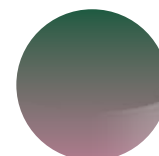
Gris/Jaune  
CAT. 2- TV 33,50%  
réf. BIC 04



Gris + Brume  
CAT. 1- TV 63,00%  
réf. BIC 73



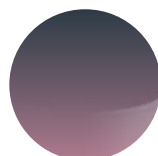
Vert/Bleu  
CAT. 1- TV 55,94%  
réf. BIC 05



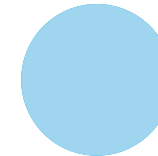
Vert/Rose  
CAT. 1- TV 43,68%  
réf. BIC 06



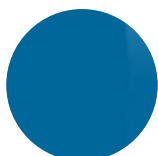
Rose/Orange  
CAT. 1- TV 57,42%  
réf. BIC 07



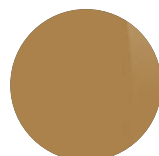
Gris/Rose  
CAT. 1- TV 25,52%  
réf. BIC 08



Bleu - Revo rouge  
CAT. 1- TV 67,10%  
réf. SH MIR 51



Revo Mercure  
CAT. 3- TV 13,70%  
réf. MIRROR 01



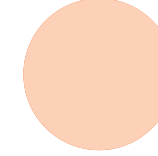
Revo Or vénitien  
CAT. 3- TV 10,87%  
réf. MIRROR 02



Revo Carmin  
CAT. 3- TV 13,04%  
réf. MIRROR 03



Revo Argent galaxie  
CAT. 2- TV 19,40%  
réf. MIRROR 04



Orange - flash or  
CAT. 1- TV 53,30%  
réf. SH MIR 50

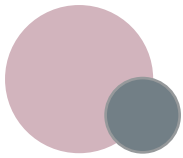


# FOTOCOLOR

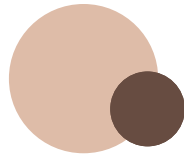
Les verres solaires photochromiques colorés



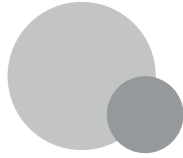
DIVEL FRANCE



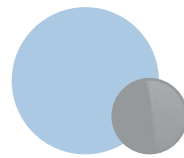
**Rose**  
uni/uni  
CAT. 1 | CAT. 3  
réf. PHG 03/55



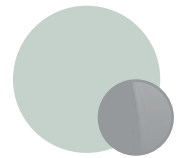
**Ambre**  
uni/uni  
CAT. 1 | CAT. 3  
réf. PHB 02/52



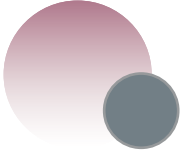
**Gris**  
uni/uni  
CAT. 1 | CAT. 3  
réf. PHG 01/54



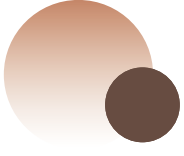
**Bleu Ciel**  
uni/uni  
CAT. 1 | CAT. 3  
réf. PHG 04/57



**Vert d'eau**  
uni/uni  
CAT. 1 | CAT. 3  
réf. PHG 018



**Rose dégradé**  
dégradé/uni  
CAT. 1 | CAT. 3  
réf. PHG 05/58



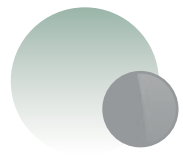
**Ambre dégradé**  
dégradé/uni  
CAT. 1 | CAT. 3  
réf. PHB 06/56



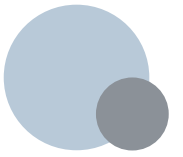
**Gris dégradé**  
dégradé/uni  
CAT. 1 | CAT. 3  
réf. PHG 07/51



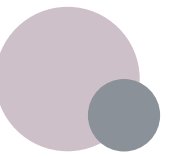
**Bleu Ciel dégradé**  
dégradé/uni  
CAT. 1 | CAT. 3  
réf. PHG 08/53



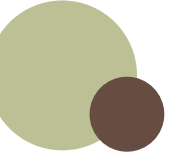
**Vert d'eau dégradé**  
dégradé/uni  
CAT. 1 | CAT. 3  
réf. PHG 00



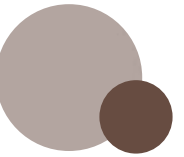
**Givre**  
uni/uni  
CAT. 1 | CAT. 3  
réf. PHG 10/70



**Brume**  
uni/uni  
CAT. 1 | CAT. 3  
réf. PHG 12/72



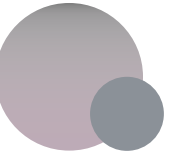
**Noisette**  
uni/uni  
CAT. 1 | CAT. 3  
réf. PHB 14/74



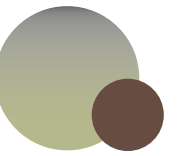
**Chocolat**  
uni/uni  
CAT. 1 | CAT. 3  
réf. PHB 16/76



**Givre dégradé**  
dégradé/uni  
CAT. 1 | CAT. 3  
réf. PHG 11/71



**Gris + Brume**  
bi-couleurs/uni  
CAT. 1 | CAT. 3  
réf. PHG 13/73

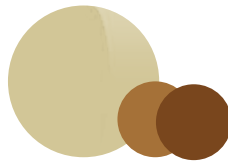


**Gris + noisette**  
bi-couleurs/uni  
CAT. 1 | CAT. 3  
réf. PHB 15/75



**Chocolat dégradé**  
dégradé/uni  
CAT. 1 | CAT. 3  
réf. PHB 17/77

# FOTOCAR

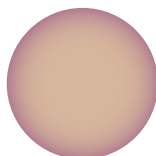


**Fotocar**  
photochromique uni/uni  
CAT. 2 | CAT.2- CAT. 3  
réf. POLARPH 01

# REVO-SPEEDY



**Revo Rose**  
CAT. 3- TV 15,30%  
verre gris  
réf. SPEEDY 04



**Revo Or Rose**  
CAT. 3- TV 12,42%  
verre brun  
réf. SPEEDY 06



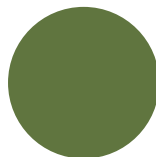
**Revo Violet**  
CAT. 3- TV 14,03 %  
verre gris  
réf. SPEEDY 07



**Revo Bleu**  
CAT. 3- TV 10,10%  
verre gris  
réf. SPEEDY 08

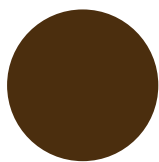
# POLARISANTS

## 450 POLA



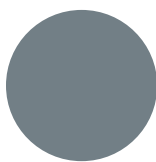
POLA 450  
CAT. 3- TV 14,60%  
Réf. POLA 450

## POLAR unis, dégradés et revo



Brun uni

CAT. 3- TV 10,50%  
réf. POLAR 01



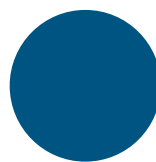
Gris uni

CAT. 3- TV 12,84%  
réf. POLAR 02



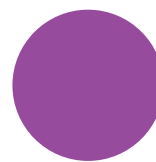
Vert G15 uni

CAT. 3- TV 10,91%  
réf. POLAR 03



Bleu

CAT. 3- TV 15,60%  
réf. POLAR 08



Violet

CAT. 2- TV 19,00%  
réf. POLAR 09



Dégradé bleu

CAT. 3- TV 13%  
réf. POLAR 22



Dégradé gris

CAT. 2- TV 40,10%  
réf. POLAR 20



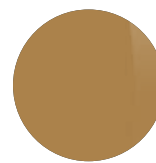
Dégradé brun

CAT. 2- TV 24,30%  
réf. POLAR 21



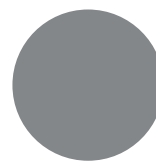
Revo Carmin sur brun

CAT. 3- TV 10,22%  
réf. POLAR 01 + MIRROR 03



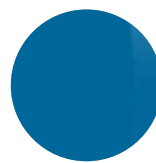
Revo Or sur brun

CAT. 3- TV 10,92%  
réf. POLAR 01 + MIRROR 02



Revo Argent sur gris

CAT. 3- TV 10,11%  
réf. POLAR 02 + MIRROR 04



Revo Mercure sur gris

CAT. 3- TV 10,05%  
réf. POLAR 02 + MIRROR 01

### DIVEL FRANCE

Bât. le Pilote - ZA en Beauvoir - 120 rue de le Outarde - 01500 CHATEAU-GAILLARD  
Tél. 09 72 54 04 80 - Fax 04 28 41 00 63 - [contact@divelfrance.fr](mailto:contact@divelfrance.fr)

[www.divelfrance.fr](http://www.divelfrance.fr)



[instagram.com/divelfrance](https://www.instagram.com/divelfrance)



[facebook.com/divelfrance](https://www.facebook.com/divelfrance)